





## TER- Terpenes Analysis

Analyzed 13 Jun, 2022 | Instrument HS-GC/MS | Method SOP-002

Analyte	LOD (ppm)	LOQ (ppm)	Result %	Result mg/g
a-Pinene	0.840	2.540	0.24	2.43
Camphene	0.940	2.850	0.06	0.57
b-Myrcene	1.080	3.260	1.48	14.78
b-Pinene	1.110	3.380	0.44	4.41
3-Carene	0.460	1.400	N D	N D
a-Terpinene	1.180	3.570	N D	N D
a-ocimene	0.240	0.710	N D	N D
Limonene	0.730	2.210	1.87	18.7
p-cymene	0.680	2.070	N D	N D
cis-b-Ocimene	0.680	2.050	N D	N D
Eucalyptol	1.500	4.530	N D	N D
γ-Terpinene	0.570	1.720	N D	N D
Terpinolene	0.970	2.950	0.05	0.54
Linalool	1.830	5.550	0.99	9.95
Isopulegol	1.650	4.990	N D	N D
Geraniol	0.780	2.370	N D	N D
trans-b-Caryophyllene	0.910	2.760	1.99	19.92
α-Humulene	0.960	2.920	0.76	7.58
cis-Nerolidol	0.510	1.540	N D	N D
trans-Nerolidol	1.110	3.360	0.15	1.49
Guaiol	2.800	8.490	N D	N D
Caryophyllene Oxide	0.970	2.950	0.11	1.13
α-Bisabolol	2.500	7.560	0.21	2.15
<b>Total Terpene Concentration</b>			<b>8.37</b>	<b>83.65</b>

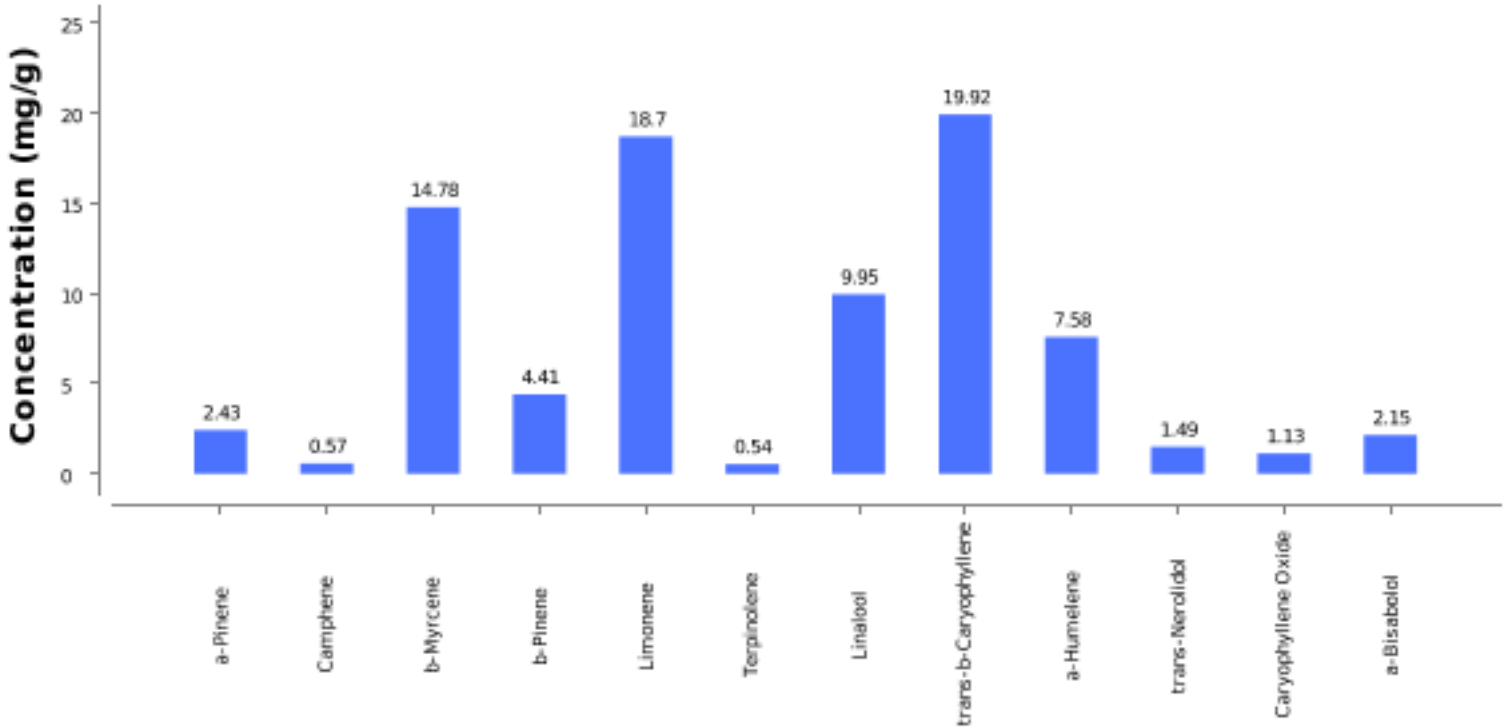
NR Not Reportable  
 ND Not Detected  
 N/A Not Applicable  
 NT Not Tested  
 LOD Limit of Detection  
 LOQ Limit of Quantification  
 <LOQ Detected  
 >ULOL Above upper limit of linearity  
 CFU/g Colony Forming Units per 1 gram  
 TNTC Too Numerous to Count



Scan the QR code to verify authenticity.

Authorized Signature

Dr. Archana R. Parameswar,  
 Laboratory Director  
 13 Jun, 2022 05:01:21 PM



NR Not Reportable  
ND Not Detected  
N/A Not Applicable  
NT Not Tested  
LOD Limit of Detection  
LOQ Limit of Quantification  
<LOQ Detected  
>ULOL Above upper limit of linearity  
CFU/g Colony Forming Units per 1 gram  
TNTC Too Numerous to Count



Scan the QR code to verify authenticity.

Authorized Signature

Dr. Archana R. Parameswar,  
Laboratory Director  
13 Jun, 2022 05:01:21 PM